

## Caffeine Metabolites

Columns: Listed on chromatograms

Dimensions: 150×4.6mm 5μm(all columns)

Mobile Phase: MeOH: H<sub>2</sub>O+0.1% HCOOH=10:90

Flow Rate: 1.0ml/min

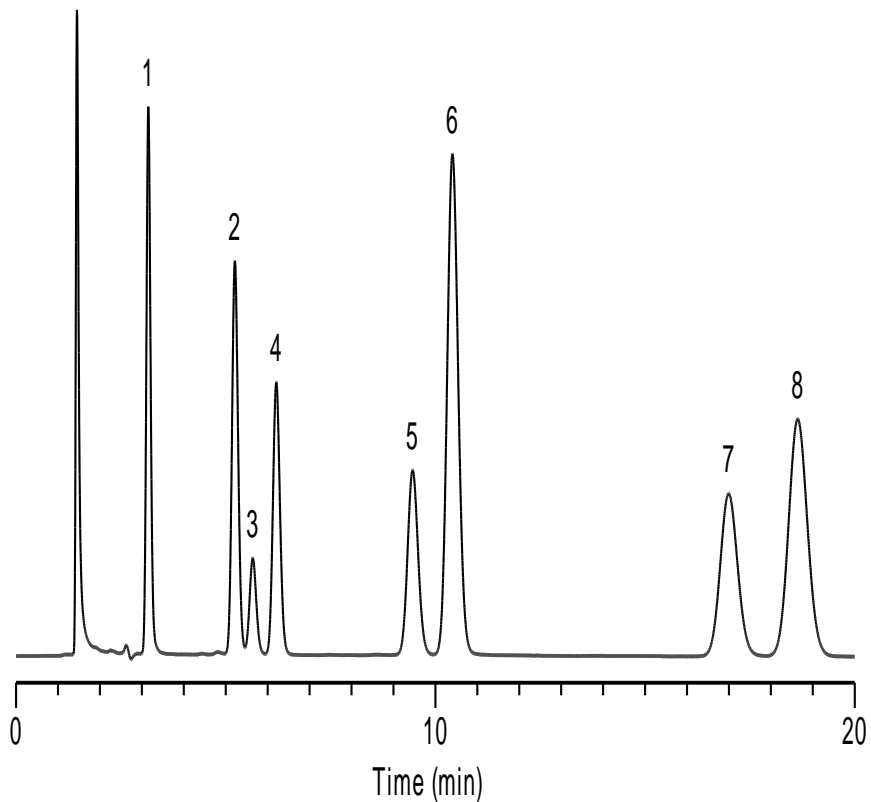
Temperature: Ambient

Detector: UV 254nm

- Sample:
1. Xanthine
  2. 7-Methylxanthine
  3. 1-Methyluric acid
  4. 3-Methylxanthine
  5. 1, 3-Dimethyluric acid
  6. Theobromine
  7. 1, 7-Dimethylxanthine
  8. heophylline

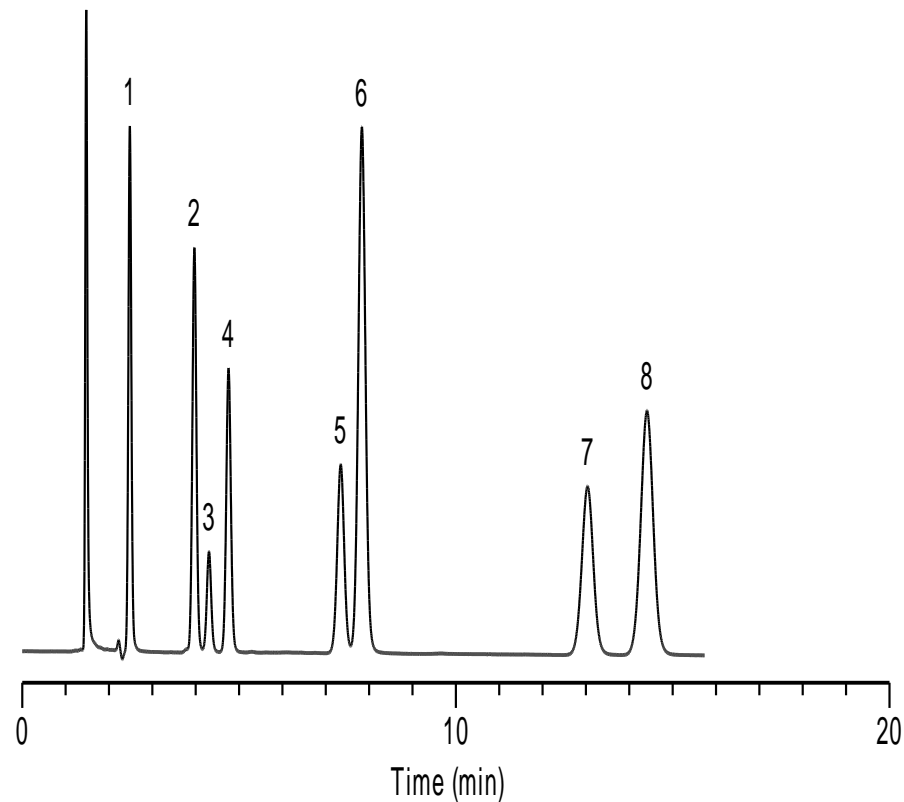
\*ZORBAX,HC,TC,Eclipse,Hypersil are registered trademarks of Agilent Technologies.Gemini,Luna are registered trademarks of Phenomenex.Symmetry,XBridge are registered trademarks of Waters Corporation.Inertsil is registered trademark of GL Sciences Inc.Kromasil is registered trademark of Eka Chemicals.BECKMAN Coulter is registered trademark of Beckman Coulter, Inc. SMT is registered trademark of Analtech Inc.Dikma Technologies is not affiliated with the above companies.

## Diamonsil C18



[China](#)

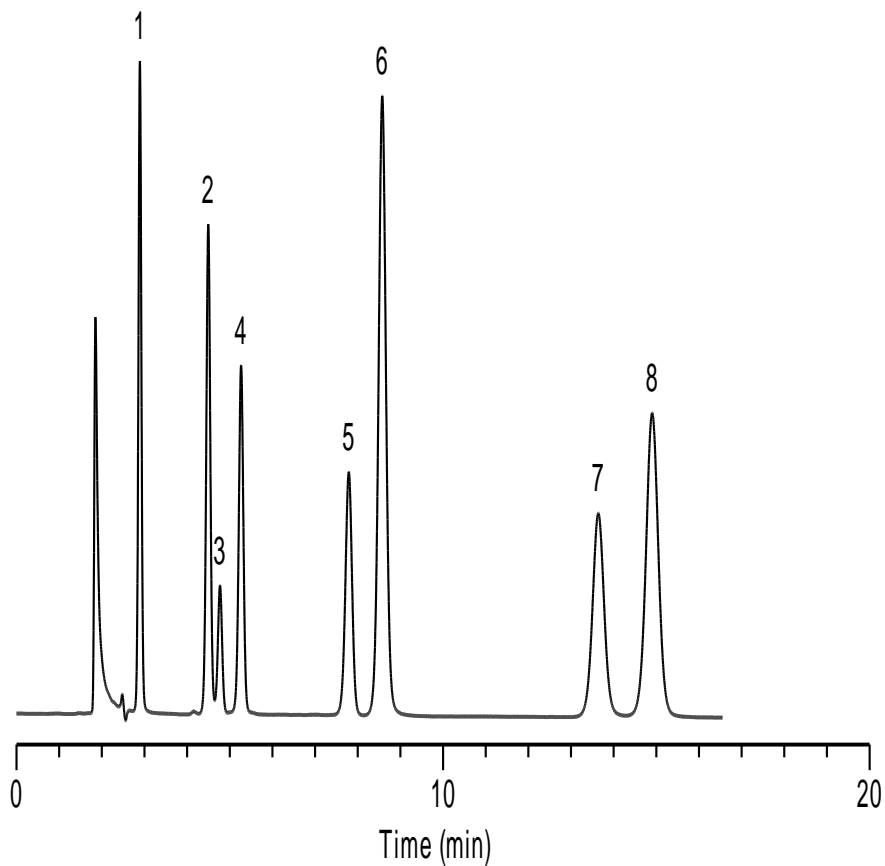
## Inspire



[Canada](#)

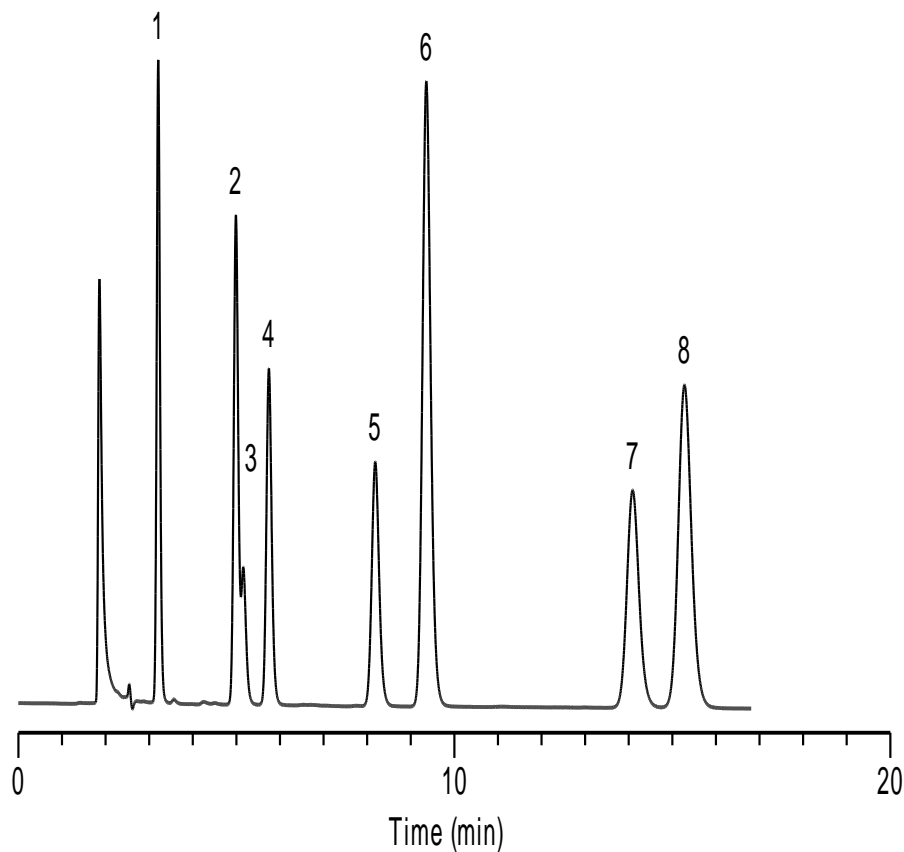
[US](#)

**\*Agilent HC-C18**



[China](#)

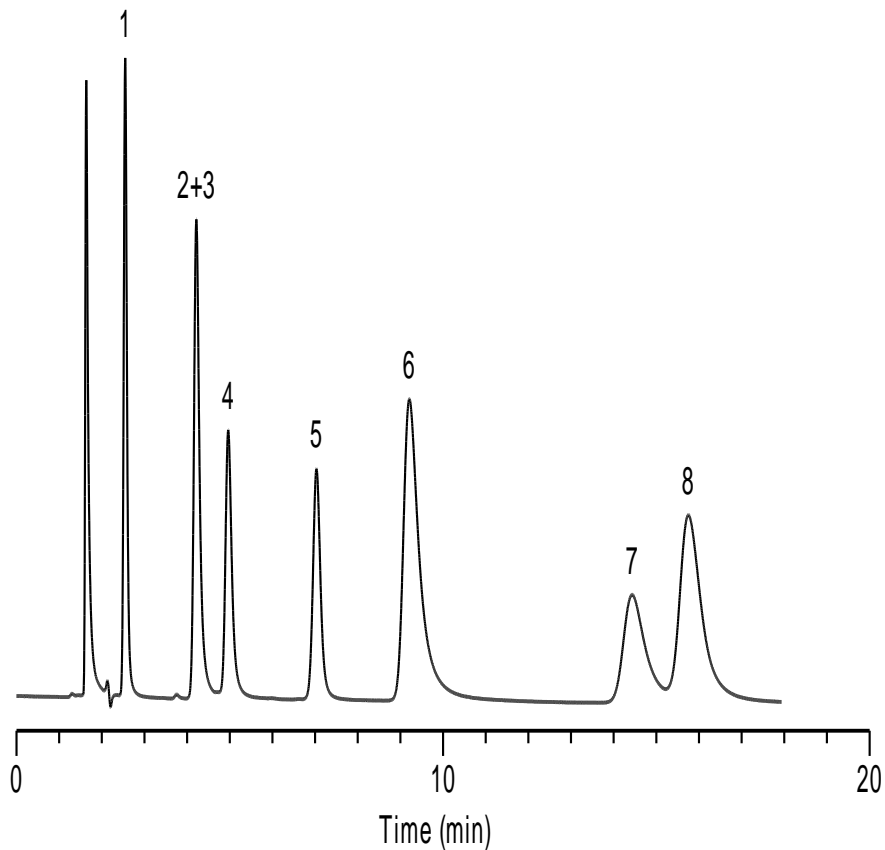
**\*Agilent TC-C18**



[Canada](#)

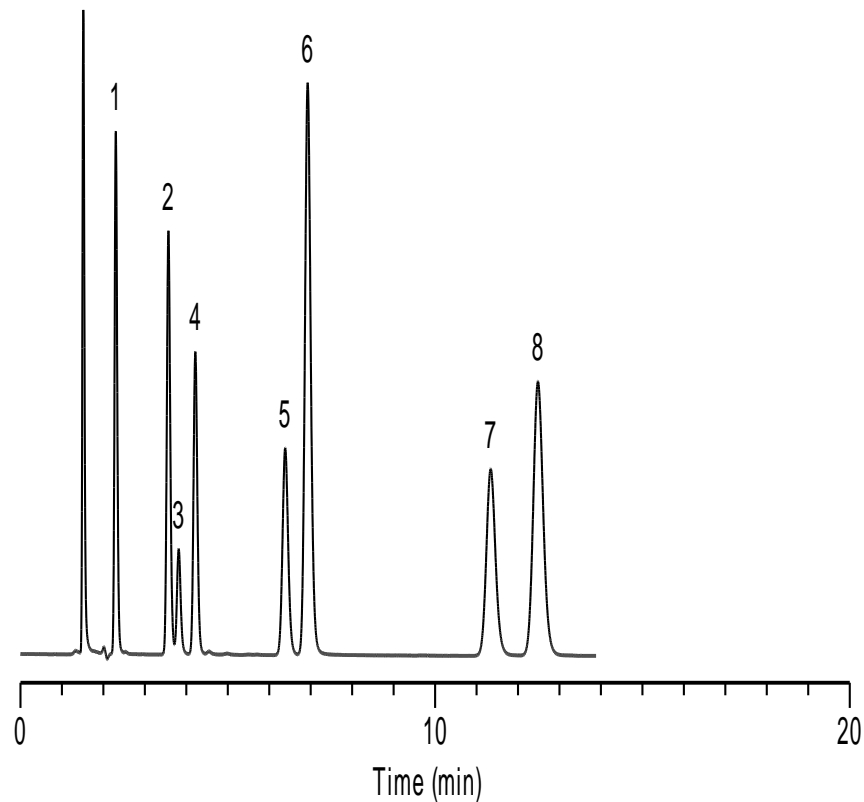
[US](#)

**\*Agilent Zorbax SB-C18**



[China](#)

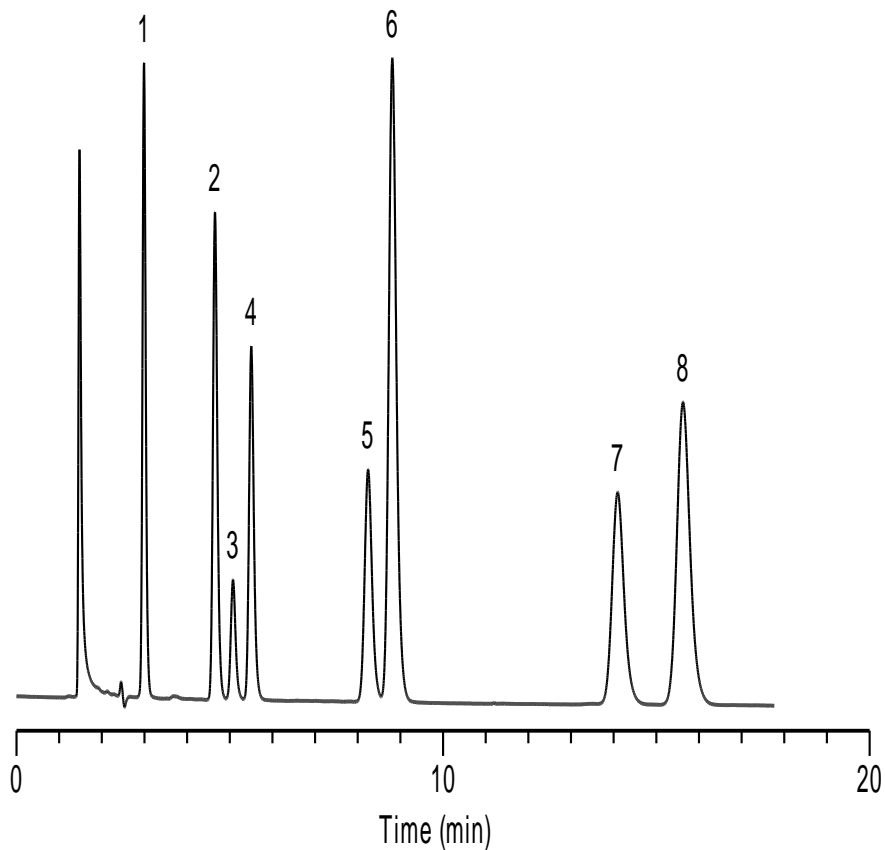
**\*Agilent Eclipse XDB-C18**



[Canada](#)

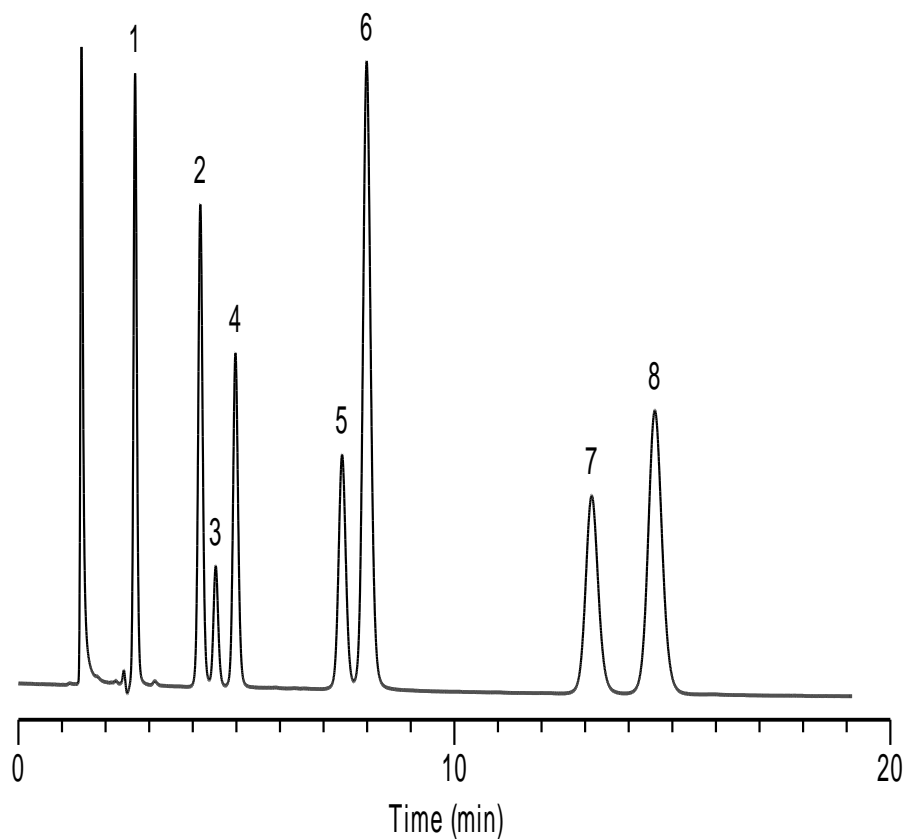
[US](#)

**\*Phenomenex Gemini-C18**



[China](#)

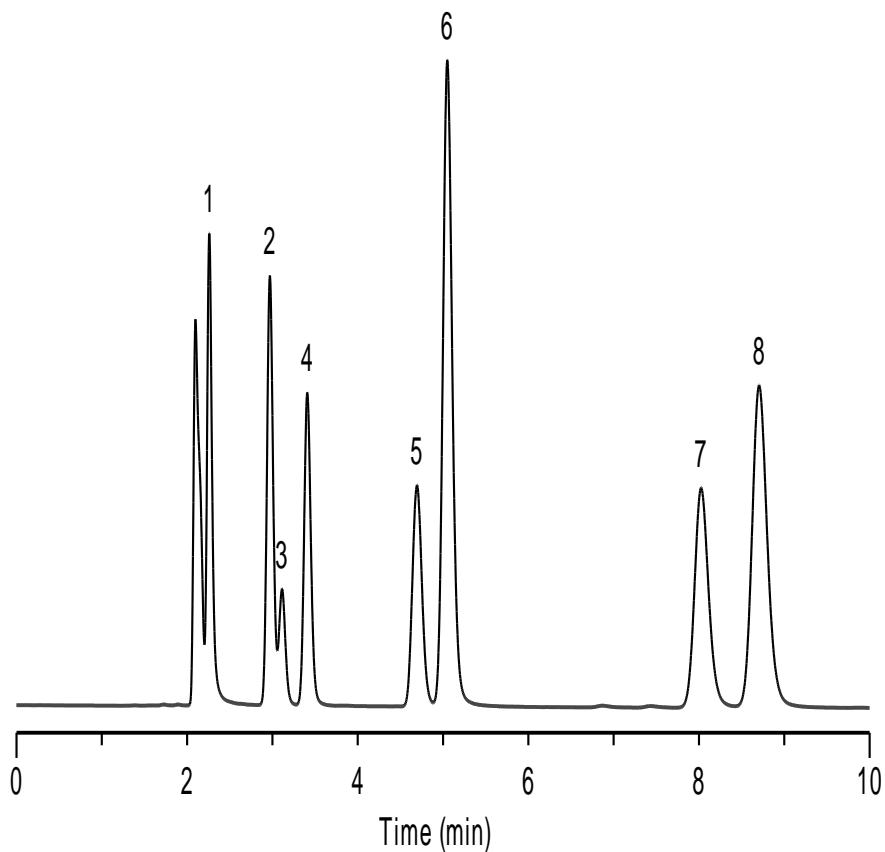
**\*Phenomenex Luna-C18(2)**



[Canada](#)

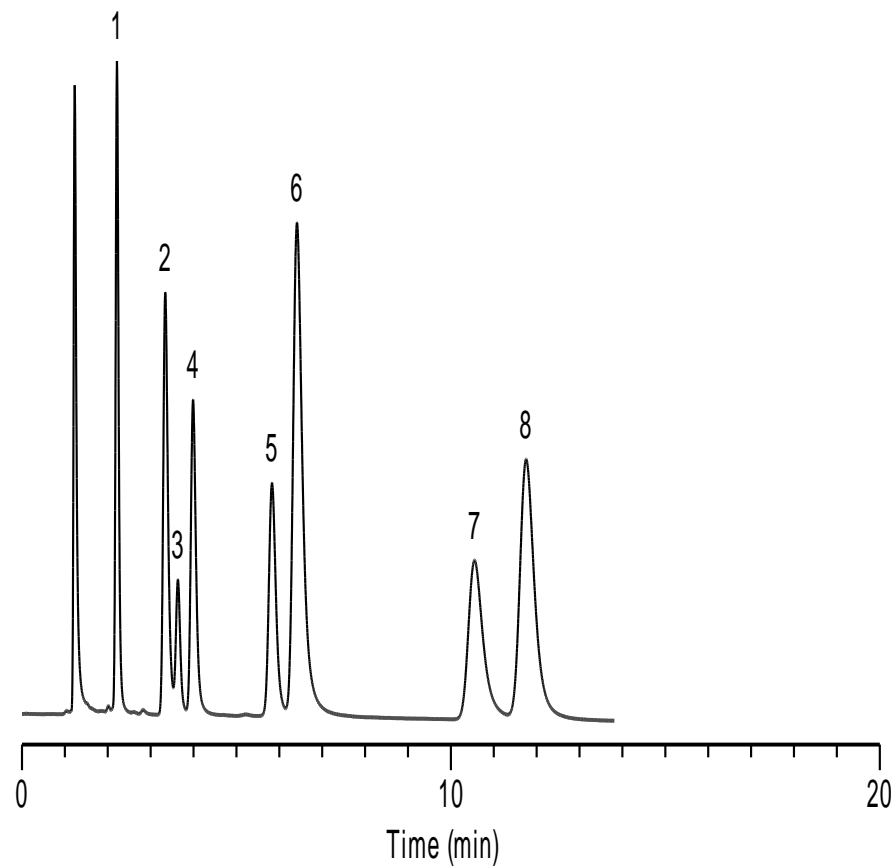
[US](#)

**\*Waters Xbridge-C18**



[China](#)

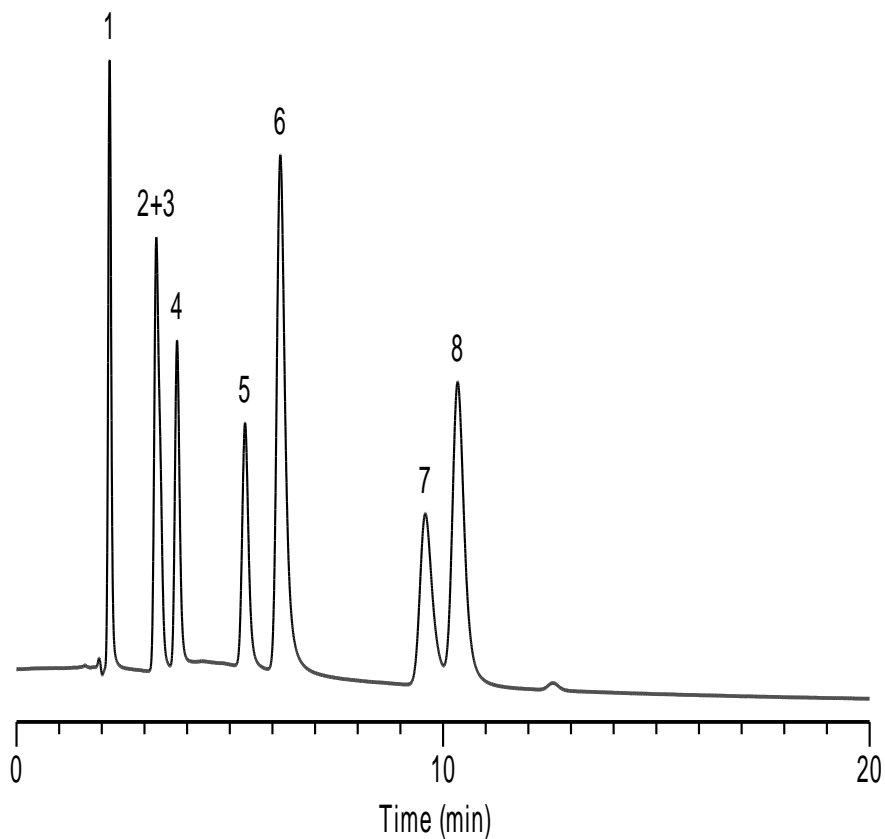
**\*Waters Symmetry-C18**



[Canada](#)

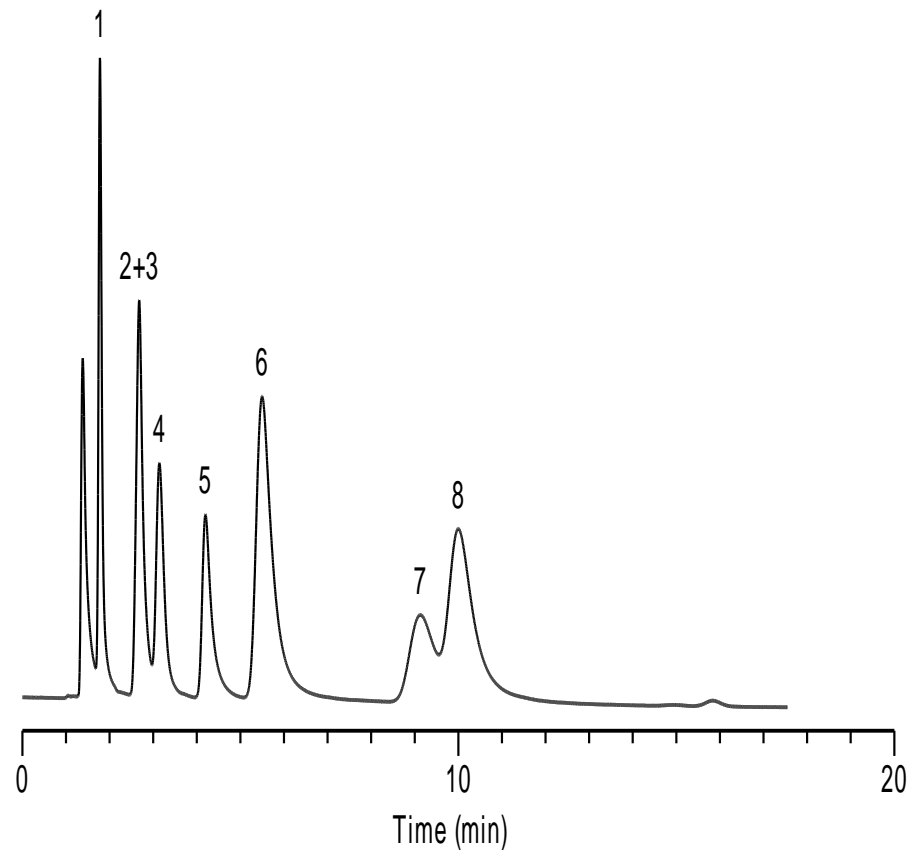
[US](#)

**\*BECKMAN Coulter-C18**



[China](#)

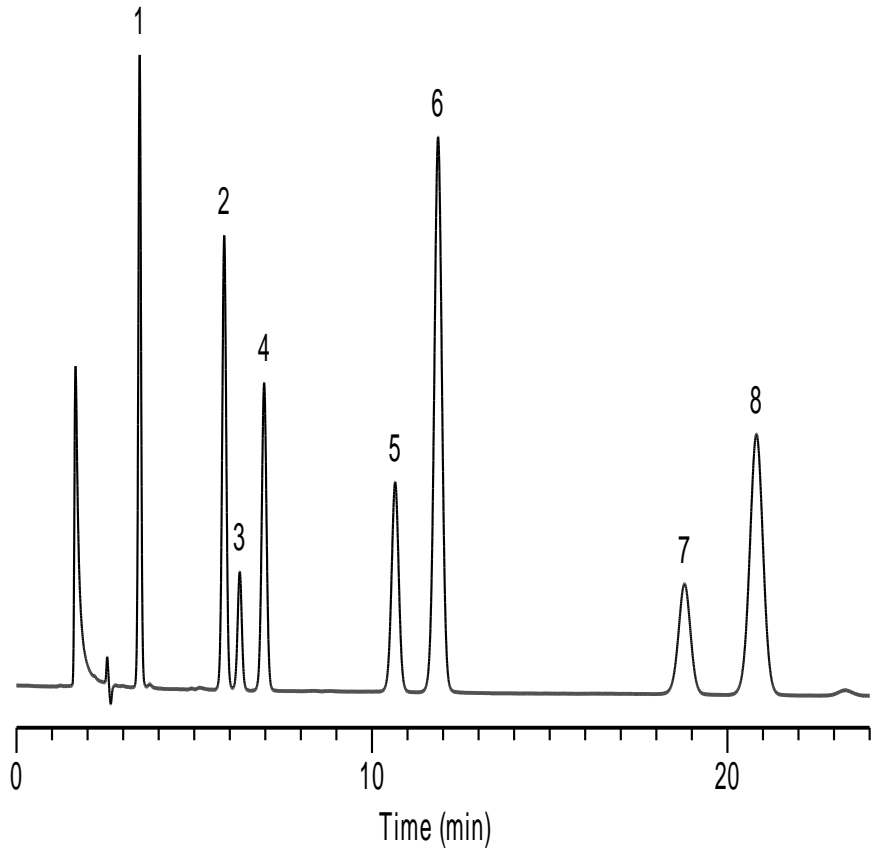
**\*SMT-C18**



[Canada](#)

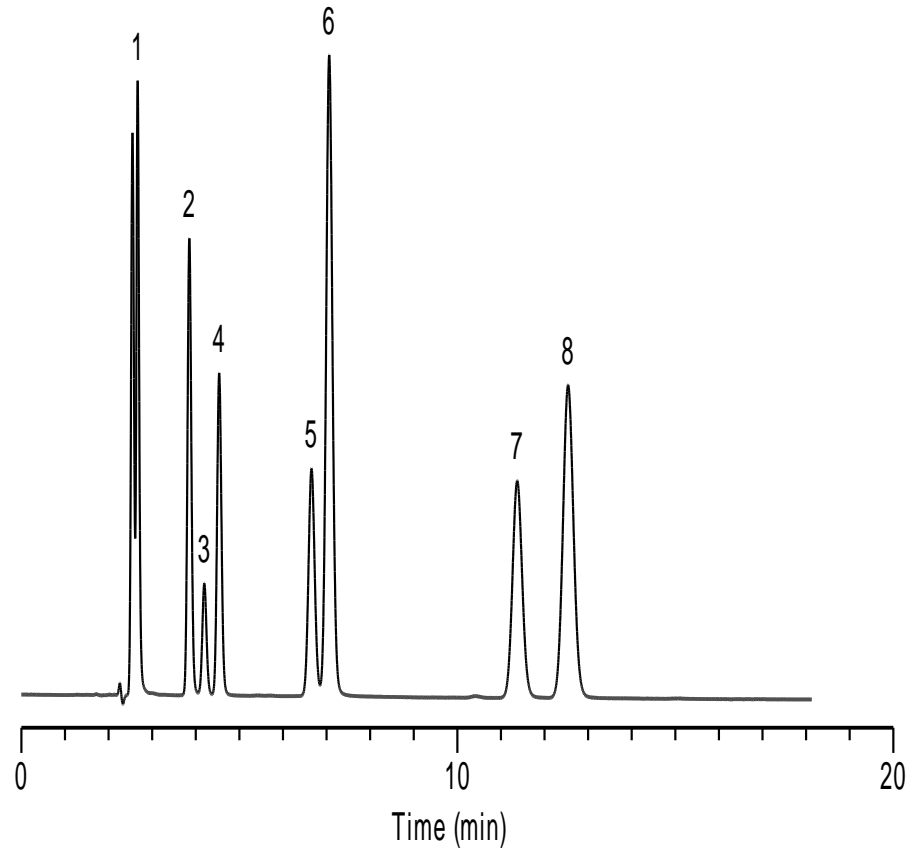
[US](#)

## Platisil C18



[China](#)

## Platisil C18(2)

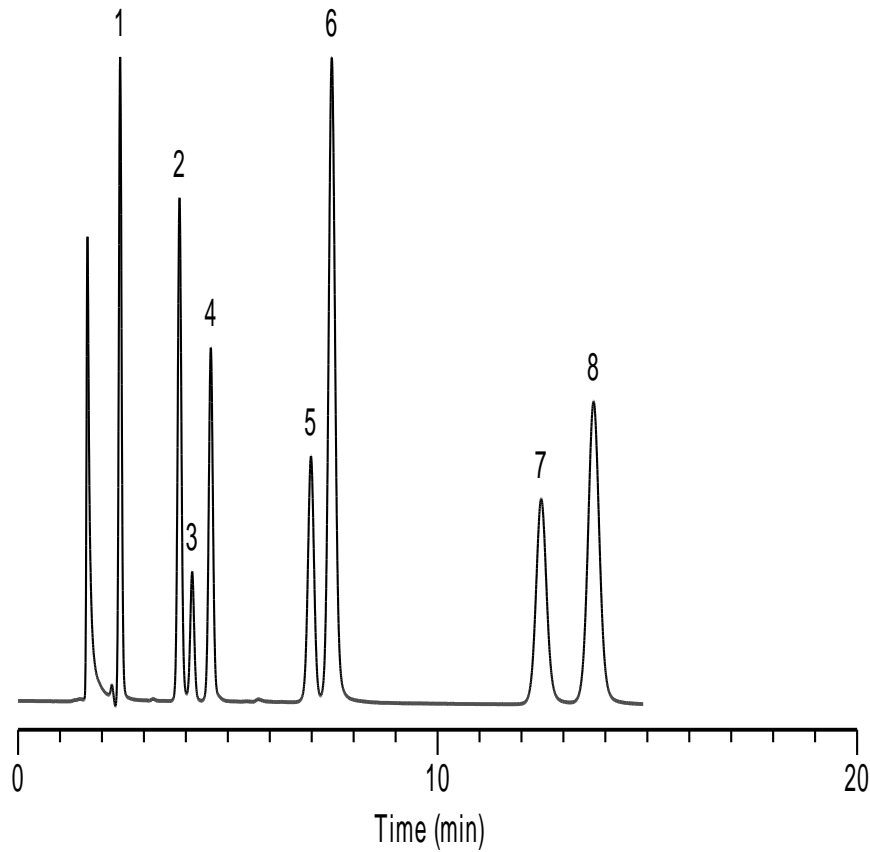


[Canada](#)

[US](#)

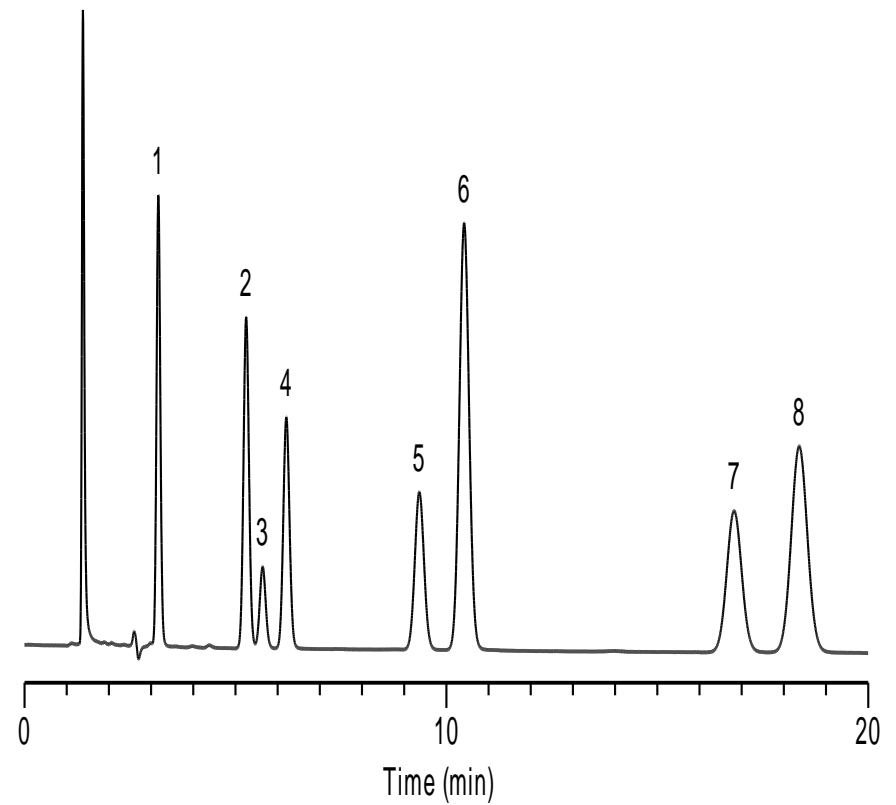


**\*Kromasil**



[China](#)

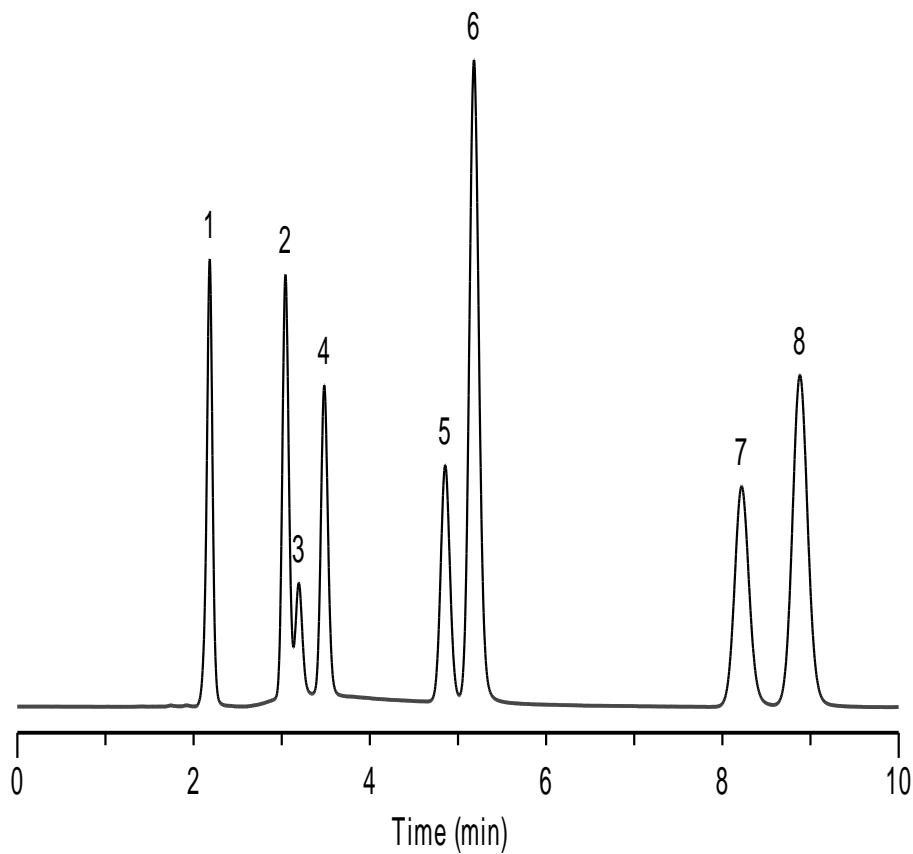
**\*Inertsil ODS-3**



[Canada](#)

[US](#)

## \*Hypersil BDS-C18



Column	$k(\text{aniline})$	$k(\text{phenol})$	$k(\text{aniline})/k(\text{phenol})$	$k(\text{toluene})$	$N(\text{toluene})$
Diamonsil C18	0.645	0.870	0.741	8.089	9016
Inspire	0.599	0.848	0.706	8.102	15503
*Agilent HC-C18	0.583	0.838	0.696	7.579	13930
*Agilent TC-C18	0.488	0.692	0.705	4.719	13187
*Agilent Zorbax SB-C18	0.455	0.576	0.790	4.745	13369
*Agilent Eclipse XDB-C18	0.457	0.643	0.711	6.064	16053
*Phenomenex Gemini-C18	0.496	0.691	0.718	5.521	11752
*Phenomenex Luna-C18(2)	0.553	0.780	0.709	6.253	11519
*Waters Xbridge-C18	0.357	0.492	0.726	4.067	13776
*Waters Symmetry-C18	0.570	0.738	0.772	6.908	11563
*BECKMAN Coulter-C18	0.386	0.481	0.802	5.311	12140
*SMT-C18	0.617	0.657	0.939	6.808	8545
Platisil C18	0.642	0.901	0.713	7.276	15210
Platisil C18(2)	0.677	0.934	0.725	7.331	14184
*Kromasil	0.597	0.843	0.708	7.664	14496
*Inertsil ODS-3	0.677	0.924	0.733	8.732	11595
*Hypersil BDS-C18	0.360	0.489	0.736	4.205	14270